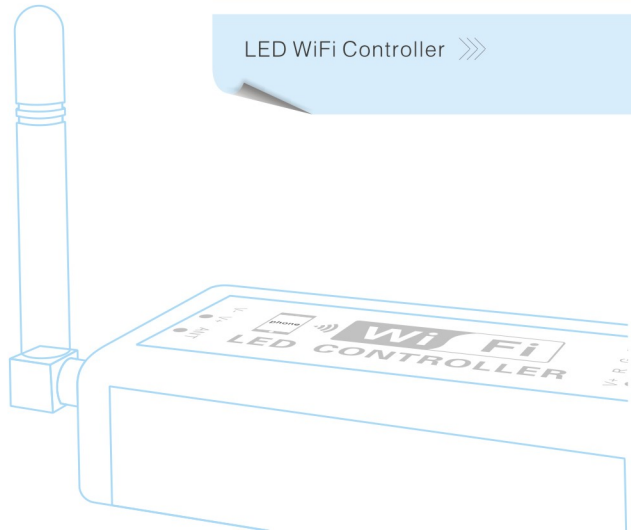


Product Manual

LED WiFi Controller >>>



WIFI DEVICE USE MANUAL

I. Summarize

LED WiFi controller is based on traditional infrared and radio frequency controller. It was born with newest WiFi technology in controller line. It let us control LED more convenient and humanity! Just use a phone whose run Android OS or IOS, we can control LED directly.

WiFi technology let range of control more wide, its valid remote distance is 50m indoor, 100m outdoor.

Application:

WiFi RGB controller, WiFi single color controller, WiFi color temperature controller, WiFi RGBW bulb

II. Data Parameter

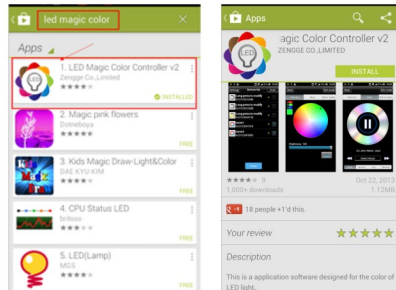
1. Working Voltage: DC7.5-24V
2. Output channel: 4/3/2/1 channel
3. Output current: 4A/channel
4. Connecting method: Common anode
5. Remote distance: 50 meters indoor, 100 meters outdoor
6. Reset button (inside the controller): Long press it more than 20s, then it was: Restored to factory settings. WiFi SSID for connection is "LEDnet XXXXXXXXXX", password: "88888888".

III. Software User Manual for Android

3.01 Installation instructions

- 1) App Name: LED Magic Color
- 2) System Requires: Android 2.3.3 or later, request device has WiFi function.

- 3) Download it free by Google Play: Entre "Google play" play store, search "LED Magic Color", find "LED Magic Color Controller v2", then download it ;



- 4) Install by QR code :

Open QR code software ,and scan following QR code. Then download and install it .



QR code site:

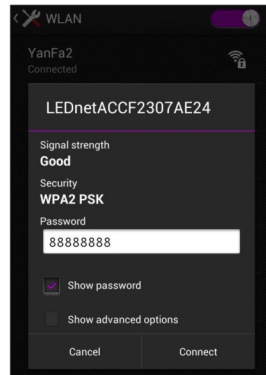
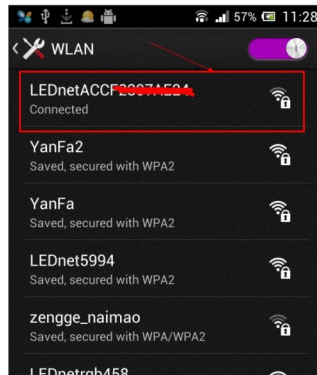
<http://www.ledmagica.com/Apps/APK/LEDWifiMagicColor.apk>

5)Install by CD files:

Open CD catalog :Android Software\LED Magic Color CN(EN).apk,Pls copy it to phone or connect phone to computer,then click LED Magic Color CN(EN).apk to install it until finished.

3.02 WIFI Connection Setting


Entre to WiFi setting interface,click WLAN"LEDnet*****",then input password "88888888".As shown in figures :



3.02 Software Using Guide

(A) Open software :



Click “” to open software, then enter to scan interface. If scan successfully, you will find following interface:

<p>If this is first time you use it, it will show above interface. It will ask if you want to connect controller to router or not. You can skip it by clicking "skip, set it next time", or click "Setting" to connect controller to router. About operating instructions, please refer to chapter "3.04 How Connect Controller to Router"</p>	<p>If this is not first time you use it, it will show above interface. Notice: if it shows no device when running (the list is empty), it may be caused by you haven't connected phone's WiFi to controller. Please refer to "3.02 WiFi Connection Setting" to set it.</p>

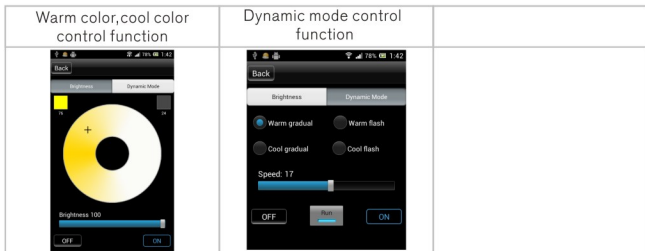
(B) Full-color controller apply interface:

<p>Color ring function</p> <p>click color what you want</p>	<p>Music control function</p>	<p>Built-in dynamic mode function</p> <p>scroll it to choose different modes</p>	<p>Custom mode function</p>
--	--------------------------------------	---	------------------------------------

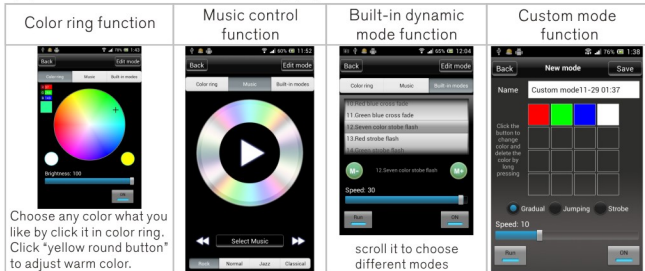
(C) Single-color controller apply interface :

<p>Single-color control function</p>	<p>Dynamic mode control function</p>	
---	---	--

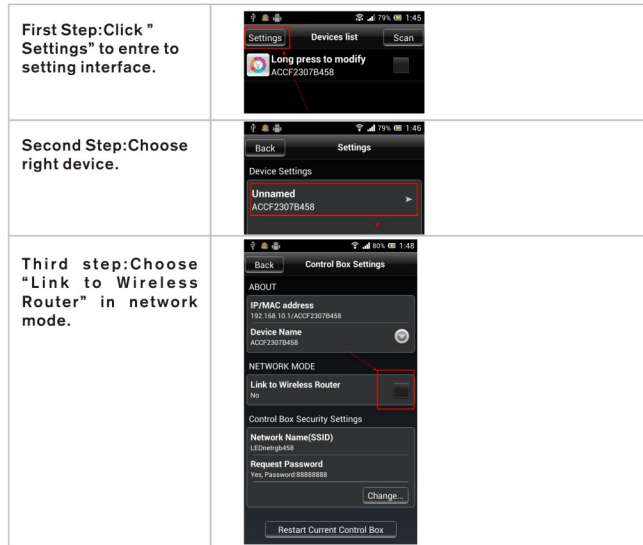
(D)WiFi color temperature controller interface :



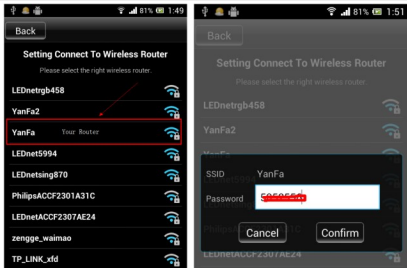
(E)RGBW 4 colors controller apply interface :



3.04 How Connect Controller to Router

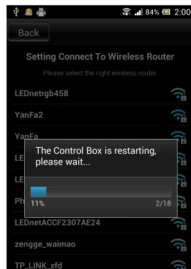


Fourth step:Click right router ,then input router's password.



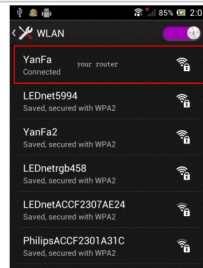
Fifth step:Waiting "The Control Box is restarting ,pls wait ..."

If above operating was successful,it will shows that interface "The Control Box is restarting ,pls wait ...",you just need to wait dozen seconds .



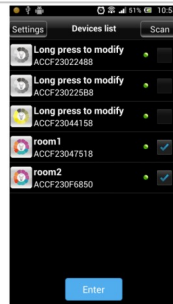
Sixth step:Connect phone to router

Entre to phone setting interface at first,and then entre to WLAN interface,reconnect your router. Finally,restart app after connected successfully!



Seventh step:Network mode

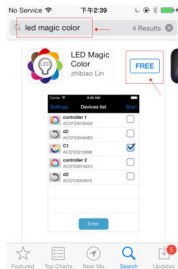
If you have a lot of controllers,pls redo above work.Connect all controllers to wireless router,then connect phone 's WiFi signal to router.Finally,you can find all controller in app after restarting. Choose device what you want,then click "Entre" to control multiple devices.



IV. Software User Manual for IOS

4.01 Installation Instructions

- 1) **App Name** : LED Magic Color
- 2) **System Requires** : IOS5.0 or above, such as iPhone, iPad, and iPod touch device.
- 3) **Download it free by "App Store"** : Enter to "App Store", search "LED Magic Color", find "LED Magic Color", then download and install it.



- 4) **Install by QR code and website** : Open QR code app, then scan following QR code. Phone will auto shows a site, then download and install it.



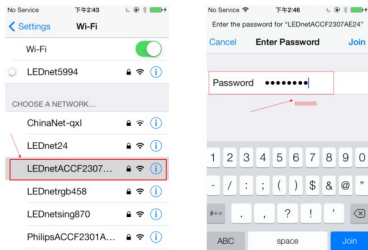
Click following site, phone will auto jumps to "App Store":
Site: <https://itunes.apple.com/us/app/led-magic-color/id595148649?ls=1&mt=8>

5) Install by CD files (just suitable for phone which can access any web site):

Open CD catalog :IOS Software \LED Magic Color CN(EN).ipa,
You can find installation program: LED Magic Color CN(EN).ipa, then copy it to phone or connect phone to computer. Click "LED Magic Color CN(EN).ipa" to install it.

4.02 WIFI Connection Setting

Entre to WiFi setting interface,click WLAN"LEDnet*****",then input WiFi password: "88888888".As shown in figures:



- 1).Antenna of controller and power supply were connected correctly .
- 2).Phone can be connected to WiFi network normally.
- 3).Set controller to single mode.

Pls check your phone as following steps:

- 1)Check whether controller's antenna works well and controller are power on or not.
- 2).Check whether controller were connected to WiFi succefully or not.If not,pls open WiFi setting interface,search controller's WiFi signal and connect it.Default WiFi name of controller is "LEDnetxxxxxxxxxx",password is "88888888".
- 3).Check whether your app is the newest or not.Click "Settings",entre to setting interface,then you can check your app version.As shown in figures:

4.03 Software Using Guide

Pls refer to software using guide for Android.

4.04 How Connect Controller to Router

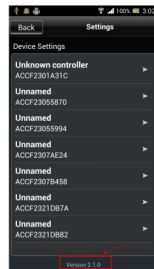
Pls refer to Android guide chapter "3.04 How Connect Controller to Router"

V.Answers for Frequently Questions

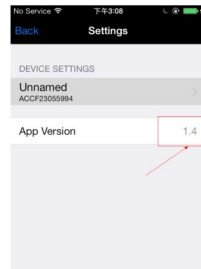
(A)How to solve it when failed to connect to WiFi device in SINGLE MODE?

Answers:

If you want to control it successfully in single mode,you must satisfy following three conditions:



(Android OS)



(IOS)

(B)How to deal with it when password is wrong in SINGLE MODE?

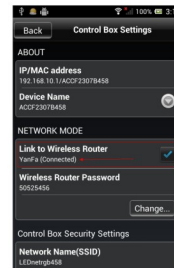
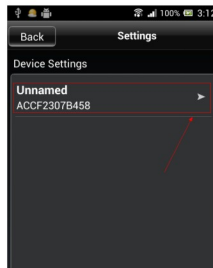
Answers:

If you forgot your previous password,pls power on your controller,then long press "Reset" for 10s and wait additional 10s.Restart controller,then controller was reset to "factory reset".Default password in single mode is:88888888

(C)How to solve it when failed to connect to WiFi device in network mode

Answers: If you want to control it successfully,you must satisfy following conditions:

- 1).Antenna of controller and power supply were connected correctly
- 2).Phone can be connected to WiFi network normally.
- 3).Check if controller were connected to WiFi succefully.Following three steps show you how to check the connection status in single mode.
 - 3.1).Connect the phone's WiFi signal "LEDnetxxxxxxxxx"to controller.:
 - 3.2).Run app and make sure it shows your LED device.
 - 3.3).Entre to setting interface,and check device's setting info,then check status of network.If status is "Connected",it means network works well.As shown in figures.



If status is "Unconnected",pls check if password is right or not.If password is wrong ,pls click "Change..." to reconnect it to router.
4).If password is right,but status is still shows "Unconnected",pls power off controller first and restart it after 3s.Then wait additional 3minutes.Finally,check controller's network status by same methods.
5).If all problems still not be solved after checking by above methods,pls restart your router and controller.
6).If all problem still exists,pls try to use new router.

(D) Whose brand or OS of phone can run WiFi device?

Answers:

For Android OS,support Android 2.3 or later;For IOS,support IOS5.0 or later.

(E)How many WiFi device can be connected to each phone in SINGLE MODE&NETWORK MODE?

Answers:

In single mode,each phone can connect 1pcs WiFi device at once time.

In network mode,qty that how many WiFi device can be connected depends on router level,no business of WiFi device.

(F)Is it possible that multiple phones control one WiFi device?

Answers:

For controller:Yes,it is possible..

For WiFi bulb:Support 2 phones in single mode.Support 3 phones in network mode.